

# midon design

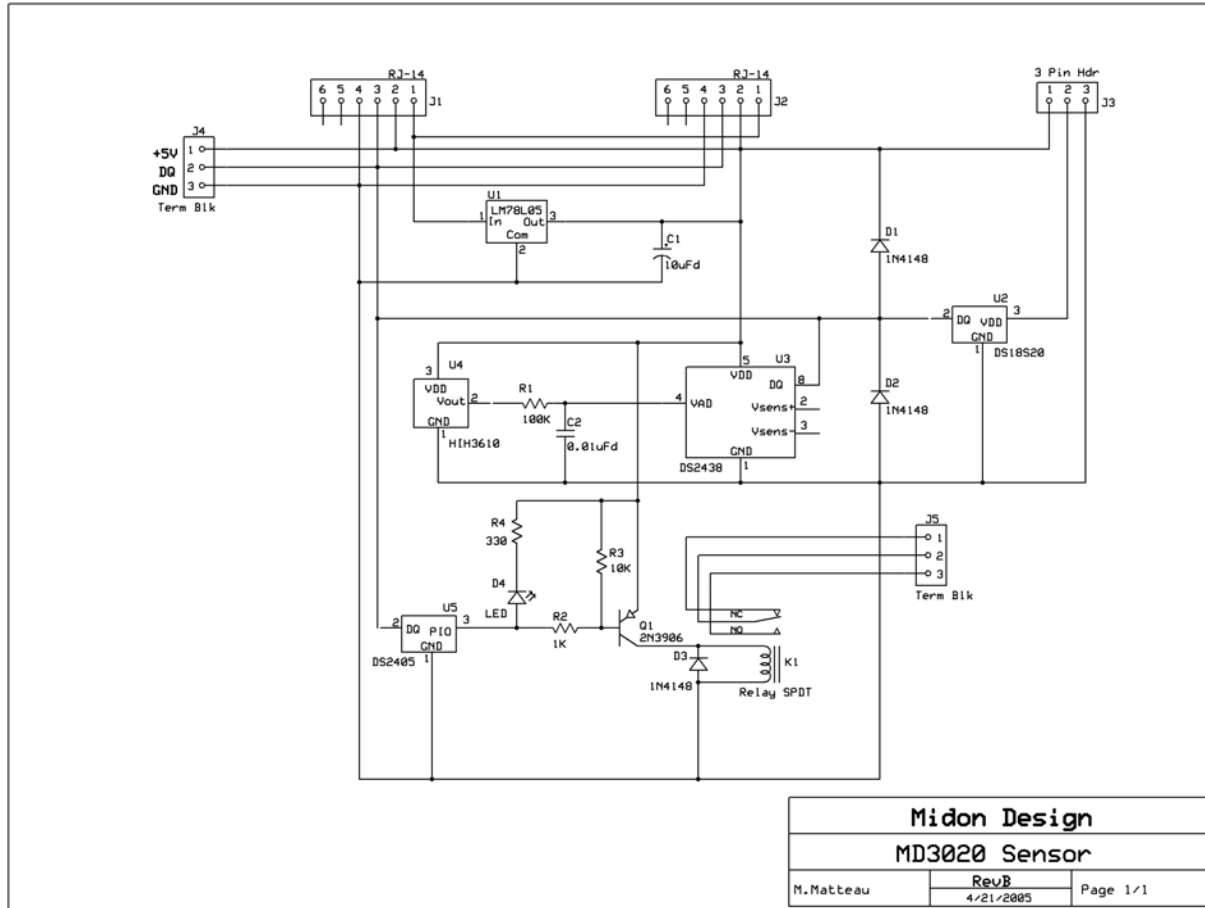


Figure 1 MD3020 Rev B Schematic

# midon design

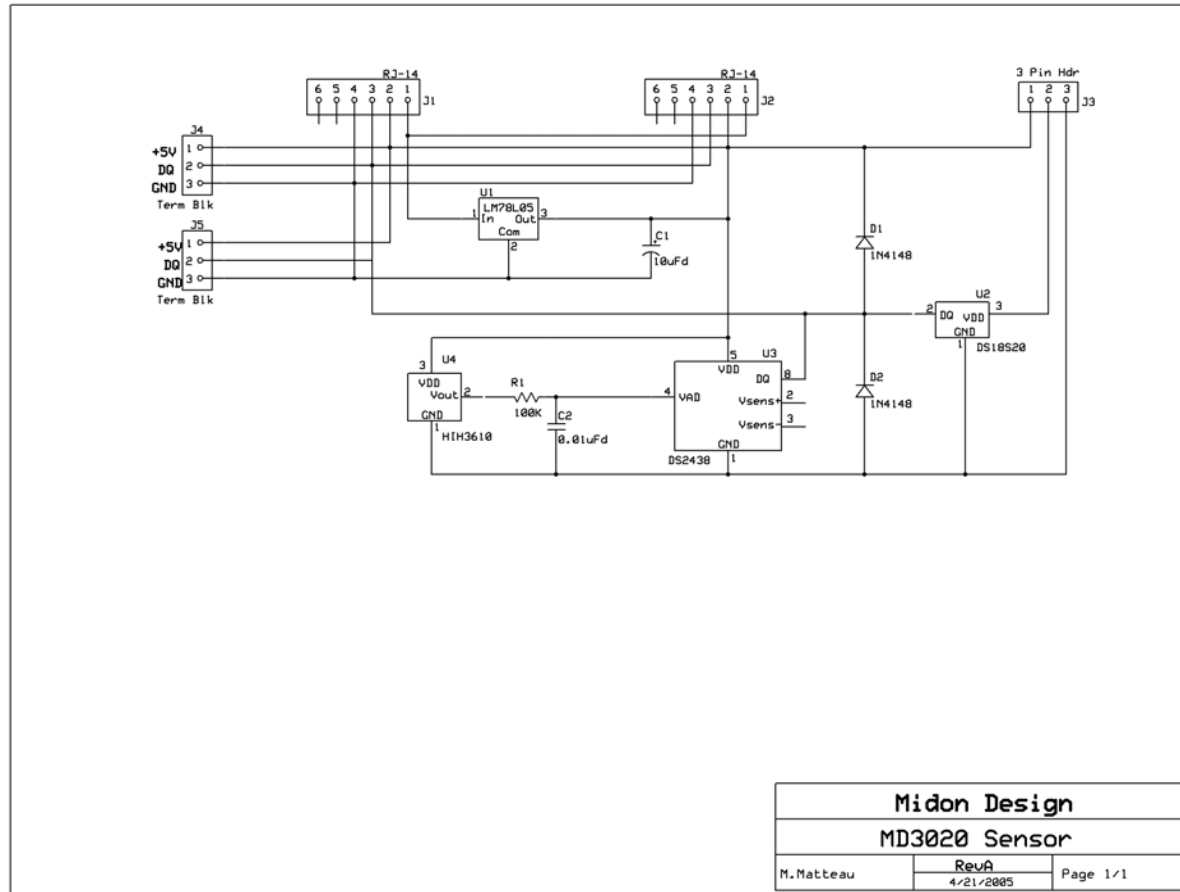


Figure 2 MD3020 Rev A Schematic

# midon design

Part	Description	Order Code	MD3020A	MD3020B	MD3020C	MD3020E	MD3020G	MD3020H
C1	10uFd		N	N	Y	Y	Y	Y
C2	0.01uFd		N	N	N	Y	N	N
D1	1N4148		N	Y	Y	Y	Y	Y
D2	1N4148		N	Y	Y	Y	Y	Y
D3	1N4148		N	N	N	N	Y	Y
D4	LED		N	N	N	N	N	Y
J1	RJ-14		N	N	Y	Y	Y	Y
J2	RJ-14		N	N	Y	Y	Y	Y
J3	3 Pin Hdr		N	Y	Y	Y	Y	Y
J4	Term Blk		N	Y	Y	Y	Y	Y
J5	Term Blk		N	N	N	N	Y	N
K1	Relay SPDT		N	N	N	N	Y	N
Q1	2N3906		N	N	N	N	Y	Y
R1	100K		N	N	N	Y	N	N
R2	1K		N	N	N	N	Y	N
R3	10K		N	N	N	N	Y	N
R4	330		N	N	N	N	N	Y
U1	LM78L05		N	N	Y	Y	Y	Y
U2	DS18S20		N	Y	Y	Y	Y	Y
U3	DS2438		N	N	N	Y	N	N
U4	HIH3610		N	N	N	Y	N	N
U5	DS2405		N	N	N	N	Y	Y
PCB	PCB RevB	MD3020A	Y	Y	Y	Y	Y	Y

**Table 1 Bill of Material**

# midon design

## Unit Descriptions

<b>MD3020A</b>	Blank PCB
<b>MD3020B</b>	DS18S20 Sensor with local powering option and terminal block connector
<b>MD3020C</b>	Same as MD3020B but with addition of RJ14 connectors and power regulation
<b>MD3020E</b>	Same as MD3020C but with addition of Humidity Sensor
<b>MD3020G</b>	Same as MD3020C but with addition of Relay output
<b>MD3020H</b>	Same as MD3020C but with addition of LED output

**Table 2 MD3020 Sensor Ordering Options**

MD3020G and MD3020H options only available with Rev B PCB.

# midon design

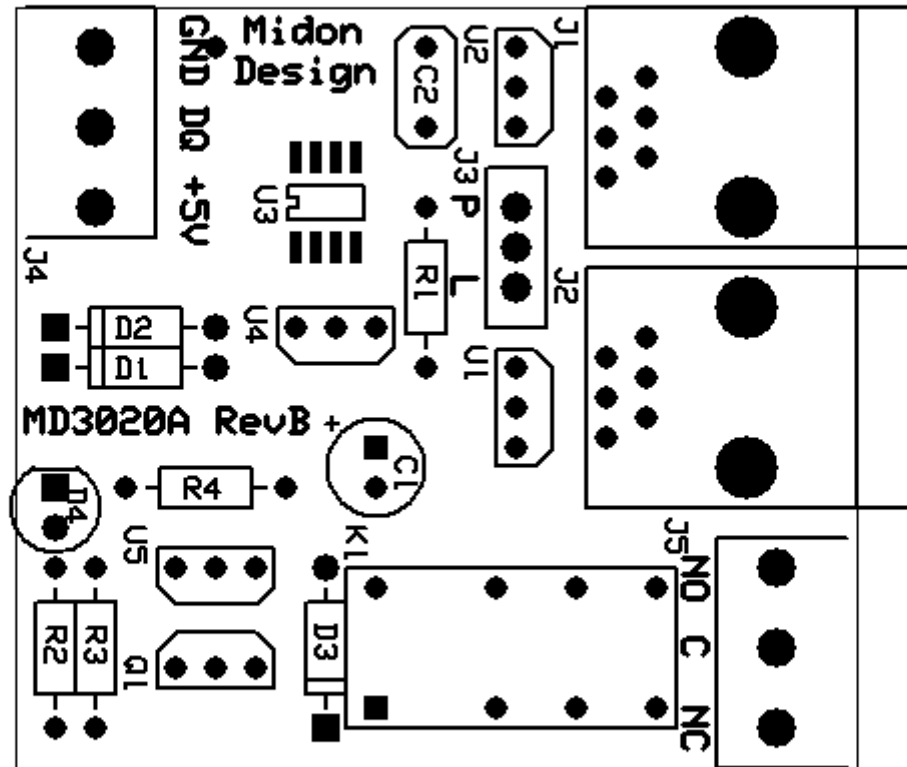


Figure 3 MD3020 Rev B PCB View